



# TAI-SAW TECHNOLOGY CO., LTD.

No. 3, Industrial 2nd Rd., Ping-Chen Industrial District,  
Taoyuan, 324, Taiwan, R.O.C.

TEL: 886-3-4690038 FAX: 886-3-4697532

E-mail: [tstsales@mail.taisaw.com](mailto:tstsales@mail.taisaw.com) Web: [www.taisaw.com](http://www.taisaw.com)

## Approval Sheet For Product Specification

Issued Date:

Product Name: One-Port SAW Resonator 432.9MHz SMD5x5mm

TST Parts No.: TC432ED-A

Customer Parts No.: \_\_\_\_\_

Company: _____
Division: _____
Approved by : _____
Date: _____

Checked by: Paul Ni

Approval by: Francis Chen

Date: Sep. 28. 2006

# TST TAI-SAW TECHNOLOGY CO., LTD.

No. 3, Industrial 2nd Rd., Ping-Chen Industrial District,  
Taoyuan, 324, Taiwan, R.O.C.

TEL : 886-3-4690038 FAX : 886-3-4697532

E-mail : tstsales@ms52.hinet.net

## SAW Resonator 432.9 MHz

MODEL NO.: TC432ED-A

REV. NO.:2

### A. FEATURES:

1. 1-Port Resonator.

### B. MAXIMUM RATING:

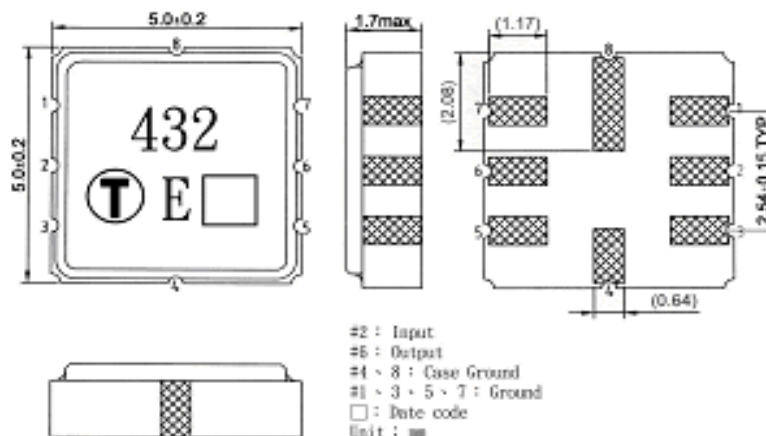
1. Power Dissipation: 0 dBm.
2. DC voltage: 12 V.
3. Storage Temperature: -40 °C to 85 °C.
4. Operating Temperature: -40 °C to 85 °C

RoHS Compliant  
Lead free  
Lead-free soldering

### C. ELECTRICAL CHARACTERISTICS:

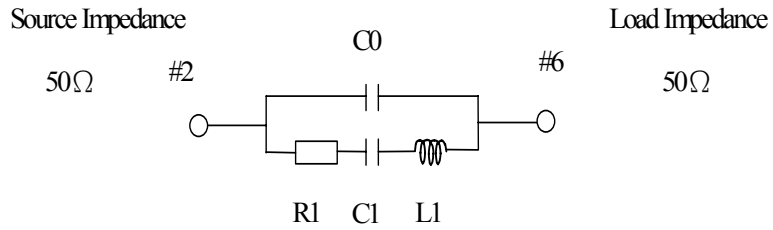
Characteristic	Units	Minimum	Typical	Maximum
Center frequency <b>Fr</b>	<b>MHz</b>	432.825	432.9	432.975
Insertion Loss <b>IL</b>	<b>dB</b>	-	1.0	2.0
Unloaded Quality factor		-	14500	-
Ageing of Fc	<b>ppm</b>	-	-	10/year
Equivalent Elements				
Motional capacitance <b>C1</b>	<b>fF</b>	-	2.0	-
Motional inductance <b>L1</b>	<b>μH</b>	-	67	-
Motional resistance <b>R1</b>	<b>Ohm</b>	-	13	22
Parallel capacitance <b>Co</b>	<b>pF</b>	-	3.4	-
Temp.coeff.	<b>ppm/c*2</b>	-	0.032	-
Turnover To	<b>deg.C</b>	20	-	50
Package size		SMD5X5X1.7mm		

### D. OUTLINE DRAWING:

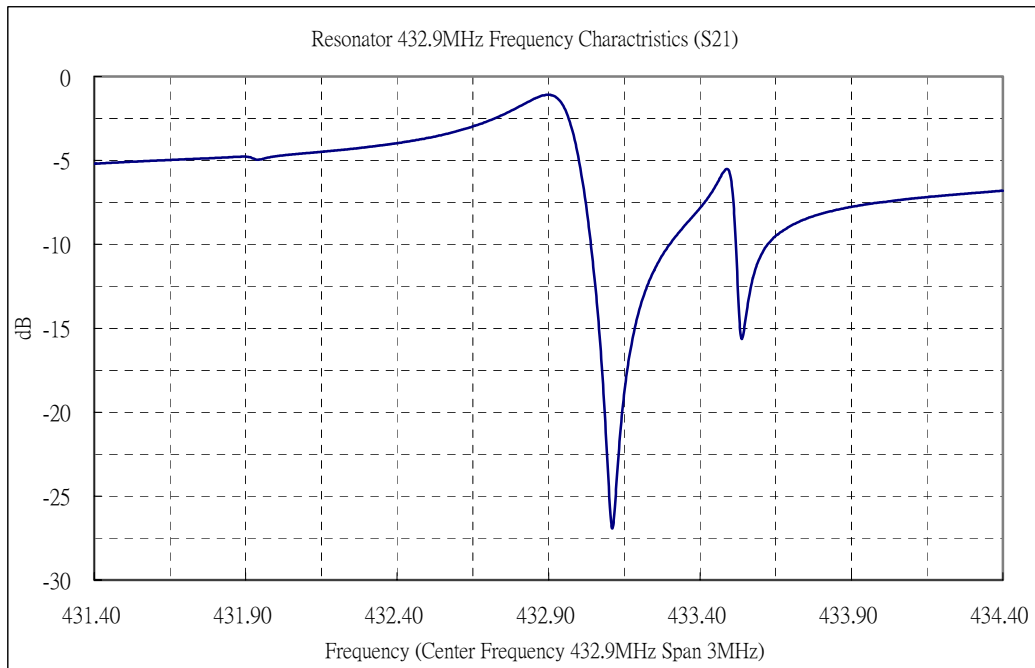


E. EQUIVALENT CIRCUIT:

One-Port Resonator:

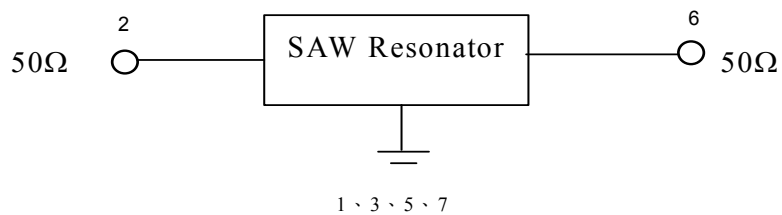


F. FREQUENCY CHARACTERISTICS:



G. TEST CIRCUIT:

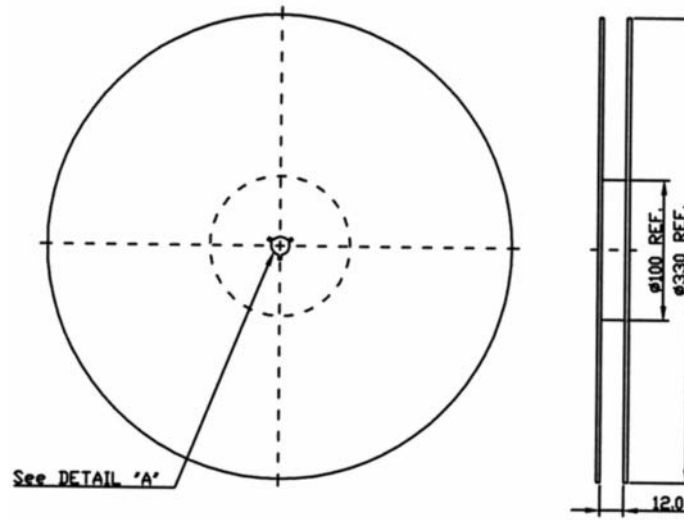
Network analyzer



## H. PACKING:

### 1. REEL DIMENSION

From 50  $\Omega$   
Network  
Analyzer



To 50  $\Omega$   
Network  
Analyzer



### 2. TAPE DIMENSION

